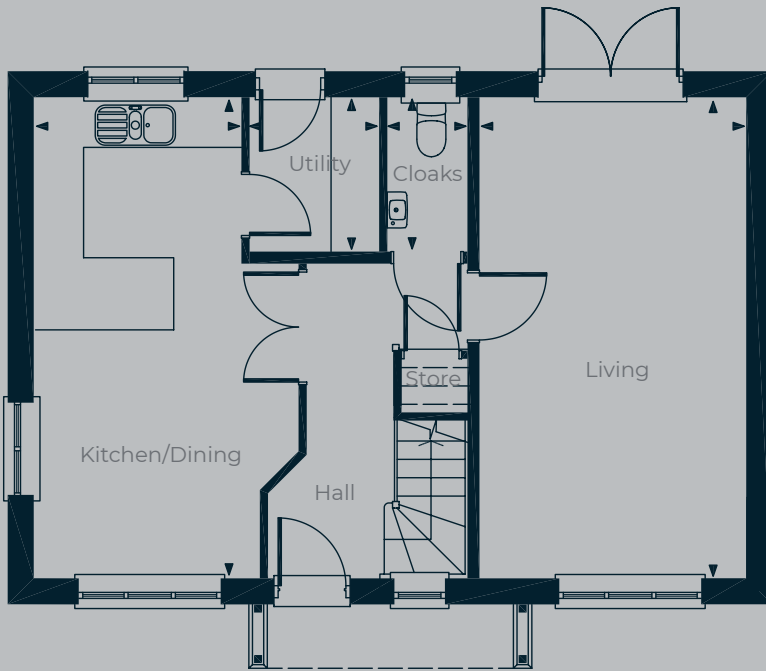


Atherstone



GROUND FLOOR

Living

3.28m x 5.92m (10'9" x 19'5")

Kitchen/Dining

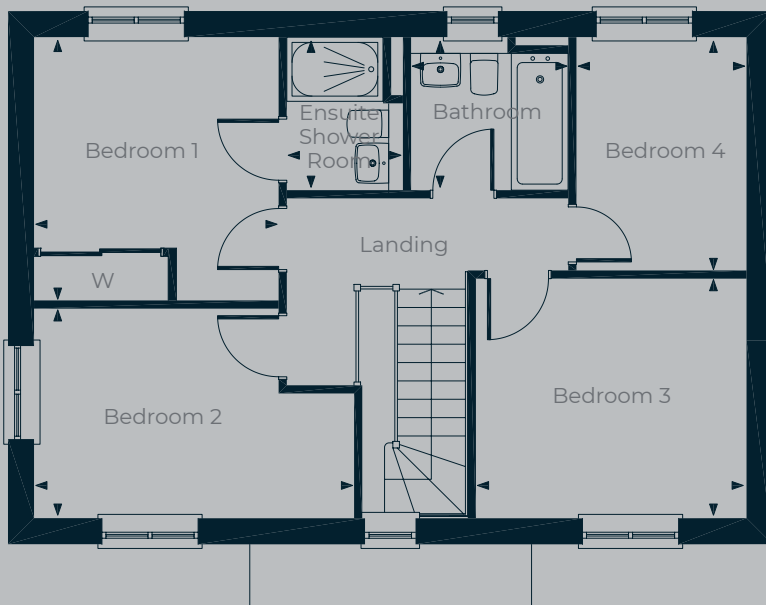
2.53m x 5.93m (8'4" x 19'5")

Utility

1.59m x 1.87m (5'3" x 6'2")

Cloaks

0.97m x 1.87m (3'2" x 6'2")



FIRST FLOOR

Bedroom 1

3.01m x 3.23m (9'11" x 10'7")

Ensuite Shower Room

1.41m x 1.82m (4'7" x 6'0")

Bedroom 2

3.95m x 2.56m (13'0" x 8'5")

Bedroom 3

3.32m x 2.94m (10'11" x 9'8")

Bedroom 4

1.98m x 2.85m (6'6" x 9'4")

Family Bathroom

1.93m x 1.82m (6'4" x 6'0")